

REX THEATRE  
SATURDAY AND SUNDAY, NOVEMBER 13 AND 14

Pearl Buck's novel now springs to life! It's coming!  
Most eagerly awaited film in history—you will  
get the thrill of a lifetime!  
Never again such a show  
on stage or screen!



The drama, the love story, the thrill. It's just like the book!

3 years to produce! It cost a fortune! Thousands in its cast!

The BIGGEST of all M-G-M HITS!

with WALTER CONNOLLY  
Tilly Losch  
Charles

M. P. Award Winner for 1937!

**THE GOOD EARTH**  
STARRING  
**PAUL MUNI**  
**LUISE RAINER**

SELECTED SHORT SUBJECTS  
Matinee Saturday and Sunday 2:30 P. M.  
Evening—Saturday 7 P. M.—Sunday 9 P. M.  
Evening Admission — 15c and 20c  
Matinee Admission — 10c and 15c

Alpine & Rex  
THEATRES

Main Street, Marlinton, W. Va.

SEC. 562  
P., L. & R.

Program Week of November 7th, 1937

SUNDAY AND MONDAY, NOVEMBER 7 AND 8

THEY FOUGHT FOR LOVE OF A DAME  
... AND THE HATE OF EACH OTHER!

**SAN  
QUENTIN**




PAT O'BRIEN  
HUMPHREY BOGART  
ANN SHERIDAN & BARTON MACLARE  
A First National Picture - Directed by Lloyd Bacon - Produced by Warner Bros.

Matinee 2:30 P. M. — Admission 10c and 20c  
Evening Show 9 P. M.—Admission 15c and 25c

SELECTED SHORTS

Saturday, June 22—One Day Only

*Yes*  
IT'S HIS  
FUNNIEST  
PICTURE!



*Will Rogers*  
**LIFE  
BEGINS  
at 40**

ROCHELLE HUDSON  
RICHARD CROMWELL  
GEORGE BARBIER  
JANE DARWELL  
SLIM SUMMERVILLE

MATINEE AT 3 O'CLOCK—ADMISSION 10c & 20c

NIGHT—10c & 30c

# SENECA

THEATRE

Marlinton, W. Va.

Program Week of June 17th, 1935

Monday and Tuesday, June 17 and 18

HELEN HAYES  
ROBERT MONTGOMERY

*bring an unforgettable love-  
thrill to the screen now in*

**Vanessa**  
HER LOVE STORY



ADDED COMEDY

ADMISSION — 10c & 25c

Mon. and Tues., July 15 and 16

DEAD BY DAY..  
ALIVE BY NIGHT

A Detective Battles Unseen  
Horrors to solve Weird Crime!

LIONEL  
BARRYMORE

THE  
**MARK  
OF THE  
VAMPIRE**

with  
ELIZABETH ALLAN  
LIONEL ATWILL  
EBELA LUGOSI  
JEAN HERSHOLT

PLEASE! Don't  
tell the ending  
to your friends.

BEYOND  
BELIEF!

A Beautiful Girl Enslaved  
by a Sinister Weird Thing!

ADMISSION—10c & 25c

# SENECA

THEATRE

Marlinton, W. Va.

Program Week of July 8th, 1935

Two Days!

Two Days!

Mon. and Tues., July 8 and 9

VICTOR HERBERT'S

"NAUGHTY  
MARIETTA"

Haunting Melodies! Nights of  
love! Virile adventure and gay ro-  
mance as Marietta defies conven-  
tions to live her own life of love!

Jeannette  
Big New  
Idea in  
Melody-  
Drama!

MACDONALD  
Nelson EDDY

ADMISSION—10c & 25c

Fri. and Sat., Aug. 30 and 31



**JOAN CRAWFORD**  
**ROBERT MONTGOMERY**  
No wonder the whole world wants to see you together again as the gay sweethearts who laughed at love—until it happened to them!  
with **CHARLIE RUGGLES**  
**FRANCHOT TONE · EDNA MAY OLIVER**  
**NO MORE LADIES**

MATINEE SATURDAY AT 3 O'CLOCK  
ADMISSION—MATINEE 10c & 20c; NIGHT 10c & 30c

# SENECA

THEATRE

Marlinton, W. Va.

Program Week of August 24th, 1935

Sat. and Sun., Aug. 24 and 25

Laugh your fill at Will!



**A NEW HIGH in HILARITY—**  
*Will*  
**ROGERS**  
**Doubting Thomas**  
*even for him!*  
with **BILLIE BURKE**  
**ALISON SKIPWORTH**  
STERLING HOLLOWAY  
GAIL PATRICK  
FRANCES GRANT

MATINEE SATURDAY AT 3 O'CLOCK—ADMISSION 10c & 20c

NIGHT ADMISSION—10c & 30c

SUNDAY SHOW 1 to 5 P. M.—ADMISSION 10c & 20c

NIGHT SHOW AT 9:15 P. M.—ADMISSION 10c & 30c

THURSDAY and FRIDAY, JAN. 9 and 10

## STRIKE UP THE BAND!.

Hang up the Flags!..

Stand up and Shout!..



**JAMES CAGNEY**  
**PAT O'BRIEN**

In Cast of  
Thousands!



also SELECTED SHORT SUBJECTS

Show Starts at 6:00 P.M. — Adm. 10c and 15c

# ALPINE

THEATRE

MARLINTON, W. VA.

FRED IDEN, Mgr.

SATURDAY, JANUARY 4—Double Feature

**Swift speed and  
terrific thrills!**

**Tim McCOY**



**"SQUARE  
SHOOTER"**



Adventure  
exactly  
as you  
like it!

—Added Feature—



A HAIR RAISER!  
A SPINE CHILLER!

**CHARLIE CHAN  
IN SHANGHAI**

**WARNER OLAND**

**IRENE HERVEY**

Chan faces  
a gang of  
death-dealing  
smugglers.

Free Chance to Win \$1 to \$9 — Adm. 10c and 15c  
Show Starts at 1 P.M. to 12 M.

THURSDAY AND FRIDAY, JANUARY 16 AND 17



# TRANSATLANTIC TUNNEL

NEW YORK TO LONDON



**RICHARD DIX  
LESLIE BANKS**

MADGE EVANS • HELEN VINSON  
C. AUBREY SMITH • BASIL SYDNEY

*New York to London  
THE MOST GIGANTIC  
FEAT IN ALL HISTORY*

*Special portrayals by  
GEORGE ARLUSS • WALTER HUSTON*

SELECTED SHORT SUBJECTS

Show Starts at 6 P. M.

Admission 10c and 15c

# ALPINE

THEATRE

MARLINTON, W. VA.

FRED IDEN, Mgr.

Program Week of Jan. 11th, 1936

SATURDAY, JAN. 11—BIG DOUBLE FEATURE

Meet **PERRY MASON**,  
New King of Crime-Hunters!

THE CASE OF THE

**HOWLING  
DOG**

WARREN WILLIAM  
MARY ASTOR



Get Set for Thrills When This Human  
Bloodhound Takes up the Scent!

— also —

"GAY BUCKAROO" with Special Cast

FREE! — CHANCE TO WIN \$1.00 TO \$9.00\*

Admission 10c and 15c

Show Starts at 1 P. M. to 12 P. M.

THURSDAY and FRIDAY, JANUARY 23 and 24

THE BIG PARADE OF THE HIGH SEAS

# BORN FOR GLORY

BETTY BALFOUR - BARRY MACKAY  
JOHN MILLS



THE GREATEST STORY  
OF YOUTHFUL HEROISM  
SINCE NATHAN HALE  
...who said, "I only regret  
that I have but one life  
to lose for my country."

SELECTED SHORT SUBJECTS

Show Starts at 6 P. M.—Admission 10c and 15c

## Our Weekly Program ALPINE

THEATRE

MARLINTON, W. VA.

FRED IDEN, Mgr.

Program Week of January 18th, 1936

SATURDAY, JANUARY 18—ONE DAY ONLY

BIG DOUBLE FEATURE

FLAMING HEARTS  
AND FLAMING ACTION!

"'Neath Arizona  
Skies"

—with—

John Wayne



— also —

"BAD BOY" with JAMES DUNN

FREE! — CHANCE TO WIN \$1.00 to \$9.00

SHOW STARTS AT 1 P. M. TO 12 P. M.

• FREE TO OUR PATRONS •

Saturday, March 14—One Day Only



Follow your favorite from flying hoofs to pounding wheels! Watch him win a girl by smashing every record for speed and thrills!

**George O'BRIEN**  
in  
**WHISPERING SMITH Speaks**

with  
• IRENE WARE •  
KENNETH THOMSON



SELECTED SHORT SUBJECTS

SHOW STARTS AT 1 P. M.

ADMISSION—10c and 15c

# ALPINE

THEATRE

MARLINTON, W. VA.

FRED IDEN, Mgr.

Program Week of March 8th, 1936

Sun. and Mon., March 8 and 9

**"THE BIG BROADCAST OF 1936"**

with Jack Oakie, Burns & Allen, Lyda Roberti, Wendy Barrie, Henry Wadsworth plus specialties by Bing Crosby, Amos 'n' Andy, Ethel Merman, Mary Boland, Charlie Ruggles and Bill Robinson.

A dashing musical comedy packed jam full of gallivanting gals and the men who man the mikies

SUNDAY MATINEE 1 to 3 P. M.

SUNDAY NIGHT AT 9 P. M.—DOORS OPEN 8:45 P. M.

MONDAY NIGHT AT 6 P. M.

ADMISSION—10c and 15c

Saturday, March 28—One Day Only

## HIS GUNS ROARED A CHALLENGE TO AN OUTLAW EMPIRE!

Meet the "one-man posse"—the man with the fastest trigger-finger in the West! See him shoot his way out of an outlaw camp and into the heart of a beautiful girl



"NEVADA"

—with—

Buster Crabbe

He stakes his life and love against his might shooting!

SELECTED SHORT SUBJECTS

SHOW STARTS AT 1 P. M.

ADMISSION—10c and 15c

A GOOD SHOW IN A GOOD TOWN

# ALPINE THEATRE

MARLINTON, W. VA.

FRED IDEN, Mgr.

Program Week of March 22, 1936

Sun. and Mon., March 22 and 23

## AN AMERICAN CAVALCADE OF COURAGE!



The Romantic Drama  
of a Romantic Generation!  
MARGARET SULLIVAN

"SO RED  
THE ROSE"

WALTER CONNOLLY  
Randolph Scott

—also—

SELECTED SHORT SUBJECTS

SUNDAY MATINEE 1 to 3 P. M.

SUNDAY NITE AT 9 P. M.—DOORS OPEN AT 8:45 P. M.

MONDAY NITE AT 6 P. M.

ADMISSION—10c and 15c

Saturday, April 4—One Day Only  
BIG DOUBLE FEATURE

FLAMING HEARTS  
AND FLAMING ACTION!

"Bar-20 Rides  
Again"

with Wm. Boyd



— also —

Take THE LAUGH-CURE!

EDWARD EVERETT HORTON in



SHOW STARTS AT 1 P. M.

ADMISSION 10c and 15c

"A Good Show In A Good Town"

ALPINE

THEATRE

Marlinton, W. Va.

FRED IDEN, Manager

Sun. and Mon., March 29 and 30

BIG DOUBLE SHOW

ALL ASHORE FOR THE YEAR'S MOST JOYOUS MUSICAL!



— also —

"THE AFFAIRS OF SUSAN"

with ZASU PITTS

FOX NEWS

SUNDAY MATINEE 1 to 3 P. M.

SUNDAY NIGHT AT 9 P. M.

MONDAY NIGHT AT 6 P. M.

ADMISSION—10c and 15c

Saturday, April 25

One Day Only

BIG DOUBLE FEATURE



— also —



Show Starts at 1 P. M.

Admission 10c and 15c

"A GOOD SHOW IN A GOOD TOWN"

# ALPINE

THEATRE

Marlinton, W. Va.

FRED IDEN, Manager

Program Week of April 19th, 1936

Sunday and Monday, April 19 and 20



FOX NEWS

SELECTED SHORT SUBJECTS

Sunday Matinee at 1 and 3 P. M.— Sunday Night at 9 P. M.

Monday Night at 6 P. M. — Admission 10c and 15c

Saturday, May 2—One Day Only

BIG DOUBLE FEATURE

The Screen Unleashes a Blast of Dynamite!

# YOU MAY BE NEXT!

THE BATTLE CRY OF THE NATION  
—"BLAST 'EM INTO ETERNITY!"

with  
Ann Sothern • Lloyd Nolan  
Douglass Dumbrille

— also —

One-Man Man-Hunt  
... outdoor romance as  
only Zane Grey writes it!

Adolph Zukor presents

## Zane Grey's "DRIFT FENCE"

with  
LARRY "Buster" CRABBE  
KATHERINE DeMILLE  
TOM KEENE • BENNY BAKER  
• GLENN ERIKSON •

SHOW STARTS AT 1 P. M.

ADMISSION—10c and 15c

"A GOOD SHOW IN A GOOD TOWN"

# ALPINE

## THEATRE

MARLINTON, W. VA.

FRED IDEN, Mgr.

Program Week of April 26, 1936

Sun. and Mon., April 26 and 27

A thrill-packed fiesta  
of melody, romance  
and adventure...!

Adolph Zukor presents

## ROSE OF THE RANCHO

A Paramount Picture with  
JOHN BOLES  
GLADYS SWARTHOUT  
Willie Howard • Herb Williams

FOX NEWS

SELECT SHORT SUBJECT

SUNDAY MATINEE 1 and 3 P. M.—SUNDAY NITE 9 P. M.

MONDAY NITE 6 P. M.

ADMISSION—10c and 15c

Saturday, May 9—One Day Only

BIG DOUBLE FEATURE

Thundering Through New Thrills  
With Thundering, Two-Gunned Tim!

TIM  
**MCCOY**

"RIDING

WILD"

Break-neck  
ADVENTURE



**TWO-GUNNED, TWO-FISTED!**

— also —

Hi Jinks  
' and  
Hilarity  
on the  
Hi Seas!

**HERE COMES  
TROUBLE**



PAUL KELLY  
ARLINE JUDGE  
MONA BARRIE  
GREGORY RATOFF

A JOY SHIP CRUISE WITH  
A JAIL-BIRD CREW...



SHOW STARTS AT 1 P. M.

ADMISSION—10c and 15c

"A GOOD SHOW IN A GOOD TOWN"

# ALPINE

THEATRE

MARLINTON, W. VA.

FRED IDEN, Mgr.

Program Week of May 3rd, 1936

Sun. and Mon., May 3 and 4

BIG DOUBLE FEATURE

REALLY,  
I'M WORTH  
MILLIONS!

YOU'RE AN AWFUL LIAR—  
BUT PLEASE DON'T STOP!



— also —

**"GENTLEMEN ARE BORN"**  
with Franchot Tone

SUNDAY MATINEE 1 and 3 P. M.—SUNDAY NITE 9 P. M.  
MONDAY NITE 6 P. M. ADMISSION—10c and 15c

## MARLINTON MERCHANTS SAVE YOU MONEY!

Shop With Them and Get Your Ticket For  
MERCHANTS NIGHT!

### O. K. GROCERY

The Place to Buy Fresh Green Vegetables

### JOHNSON'S RESTAURANT

Chicken Dinner Every Sunday

### MARLINTON ELECTRIC SHOE SHOP

"Friend of the Old Shoe"

### P. C. CURRY

If It Is To Eat — We Have It

### WILBER SHARP'S POOL ROOM

Delicious Sandwiches and Beer

### THE WAFFLE SHOP

Watch For the Opening in Our New Location

### MACQUEEN'S

Everything for "My Lady" For Christmas

### ROYAL DRUG STORE

Give Him a Pen and Pencil Set This Xmas

### SHANKLIN'S

"Store for the Lad and His Dad"

### TOLL HOUSE RESTAURANT & SERVICE STATION

Gas With Us — Good Eats and Cold Drinks

### TOM WISEMAN'S BARBER SHOP

The Men's Beauty Shop

### MARLINTON CLEANERS

You've Tried the Rest, Now Try the Best

### ANNETTE BEAUTY SHOP

Holiday Specials in Permanent Waves

### THE MEN'S SHOP

Everything From Head to Toe

Don't Forget to Ask For Your MERCHANT TICKET  
Let's Make TUESDAY Night COMMUNITY NIGHT

MERRY XMAS

# Alpine & Rex THEATRES

MAIN STREET, MARLINTON, W. VA.

Sec. 562, P., L. & R.

Program Starting December 19, 1936

## REX THEATRE

SATURDAY and SUNDAY, DECEMBER 19 and 20



EVERYTHING NEW—  
EXCEPT THE DIMPLES!

*Shirley*  
**TEMPLE**  
*in*  
**Dimples**

FRANK MORGAN  
Stepin FETCHIT  
HELEN WESTLEY  
ROBERT KENT



ALSO SELECTED SHORT SUBJECTS

MATINEE 2:30 P. M. — ADMISSION 10c and 20c

EVENTS ADM. 10c

## MARLINTON MERCHANTS SAVE YOU MONEY!

Shop With Them and Get Your Ticket For  
MERCHANTS NIGHT!

### O. K. GROCERY

The Place to Buy Fresh Green Vegetables

### JOHNSON'S RESTAURANT

Chicken Dinner Every Sunday

### MARLINTON ELECTRIC SHOE SHOP

"Friend of the Old Shoe"

### P. C. CURRY

If It Is To Eat — We Have It

### WILBER SHARP'S POOL ROOM

Delicious Sandwiches and Beer

### THE WAFFLE SHOP

Watch For the Opening in Our New Location

### M a c Q U E E N ' S

Everything for "My Lady"

### ROYAL DRUG STORE

Try Our Fountain

### S H A N K L I N ' S

"Store for the Lad and His Dad"

### TOLL HOUSE RESTAURANT & SERVICE STATION

Gas With Us — Good Eats and Cold Drinks

### TOM WISEMAN'S BARBER SHOP

The Men's Beauty Shop

### MARLINTON CLEANERS

You've Tried the Rest. Now Try the Best

### ANNETTE BEAUTY SHOP

Holiday Specials in Permanent Waves

### THE MEN'S SHOP

Everything From Head to Toe

Don't Forget to Ask For Your MERCHANT TICKETS.  
Let's Make TUESDAY Night COMMUNITY NIGHT!

A HAPPY NEW YEAR TO ALL!

# Alpine & Rex THEATRES

MAIN STREET, MARLINTON, W. VA.

Sec. 562, P., L. & R.

Program Week of December 27th, 1936

## REX THEATRE

SATURDAY and SUNDAY, DEC. 26 and 27



Matinees 2:30 P. M. — Adm. 10c and 20c  
Evening Shows Adm. 15c and 25c

A HAPPY NEW YEAR TO ALL!

# MERCHANT NIGHT TUESDAY

GET YOUR TICKETS AT:—

O. K. GROCERY

SHANKLIN'S CLOTHING STORE

P. C. CURRY'S GROCERY and HARDWARE

MARLINTON ELECTRIC SHOE SHOP

ANNETTE BEAUTY SHOP

TOM WISEMAN'S BARBER SHOP

MARLINTON CLEANERS and DYERS

TOLL HOUSE RESTAURANT and SERVICE  
STATION

MEN'S SHOP

MacQUEEN'S

WILBER SHARP'S POOL ROOM

JOHNSON'S RESTAURANT

WAFFLE SHOP

# Alpine & Rex

THEATRES

MAIN STREET, MARLINTON, W. VA.

SEC. 562, P., L. & R.

Program Week of January 9 to 16

REX THEATRE

SATURDAY AND SUNDAY, JANUARY 9 AND 10



MATINEE SATURDAY and SUNDAY, 2:30

Matinee—Admission 10c and 20c—Evening Admission 15c-25c

**MERCHANT NIGHT  
TUESDAY**

GET YOUR TICKETS AT:—

O. K. GROCERY

SHANKLIN'S CLOTHING STORE

P. C. CURRY'S GROCERY and HARDWARE

MARLINTON ELECTRIC SHOE SHOP

ANNETTE BEAUTY SHOP

TOM WISEMAN'S BARBER SHOP

MARLINTON CLEANERS and DYERS

TOLL HOUSE RESTAURANT and SERVICE  
STATION

MEN'S SHOP

MacQUEEN'S

WILBER SHARP'S POOL ROOM

JOHNSON'S RESTAURANT

WAFFLE SHOP

**Alpine & Rex**

**THEATRES**

MAIN STREET MARLINTON, W. VA.

SEC. 562, P. L. & R.

**Program Week of January 9 to 16**

**REX THEATRE**

**SATURDAY AND SUNDAY, JANUARY 9 AND 10**

SHOW OF  
SHOWS  
WILLIAM  
POWELL  
MYRNA LOY  
LOUISE RAINER

50 STARS  
300  
GIRLS

**THE GREAT  
TEGFIELD**

TEN \$6.00  
SHOWS

**MATINEE SATURDAY AND SUNDAY 2:30**

Matinee—Admission 50c and 25c—Evening—Admission 1.00 and 50c

REX THEATRE  
Saturday and Sunday, April 10 and 11

Swing high! Swing low! First you're  
up, then you're down . . . that's love!



Fred blows a hot trumpet  
but he could in love! Carole  
sings a torch song! Butter-  
worth's a panic. Dorothy  
Lamour sings and swings!

Adolph Zukor presents  
**CAROLE LOMBARD**  
**FRED MACMURRAY**

**"SWING HIGH,  
SWING LOW"**

CHARLES BUTTERWORTH - JEAN DIXON  
DOROTHY LAMOUR - HARVEY STEPHENS

Show Starts Saturday at 2:30 P. M., Continuous to 11:30 P. M.  
Mat. Adm. 10c, 20c to 6 P. M.; Eve. Show 15c, 25c; Sun. Mat. 2:30

# Alpine & Rex THEATRES

MAIN STREET, MARLINTON, W. VA.

Sec. 562, P., L. & R.

Program Week of April 11~~th~~ 1937

ALPINE THEATRE  
Sunday and Monday, April 11 and 12



**"PAROLE RACKET"**  
— with —  
**PAUL KELLY  
& ROSALIND KEITH**

FOX NEWS

Matinee Sunday at 2:30 P. M.—Admission 10c and 15c  
Evening Show, at 8:30 P. M.—Admission 15c and 20c

REX THEATRE  
Sat. and Sun., June 19 and 20

If you were  
born under the  
sign of the  
Crab, don't let  
it worry you.  
You're going  
to laugh dull  
care away un-  
der the sign of  
the Bull!



**JOE BROWN**  
**When's Your  
Birthday?**

Marian Marsh • Fred  
Keating • Edgar Kennedy

**A Man with a Big Mouth  
is Coming Into Your Life!**

MATINEE 2:30 P. M.—ADMISSION 10c and 20c

# Alpine & Rex THEATRES

MAIN STREET, MARLINTON, W. VA.

Sec. 562, P., L. & R.

Program Starting June 19th, 1937

Fri. and Sat., June 18 and 19

DEFYING THE MOODED KITHERS OF THE

## BLACK LEGION

**HUMPHREY BOGART**  
DICK FORAN • IRIN O'BRIEN-MOORE  
ANN SHERIDAN • ROBERT BARRAT

No punches pulled,  
no words minced

**AMERICA'S SECRET FRATERNITY OF FIENDS!**

Thursday July 11th BANK HOLIDAY

## THERE'S MURDER IN THE HEIR!

Where there's a million dollar  
will...there's someone to kill!  
Watch irrepressible Perry  
Mason unravel the clues of  
his most baffling mystery!

"THE CASE OF THE

## STUTTERING BISHOP"

By Erle Stanley Gardner, with  
**DONALD WOODS**  
**ANN DVORAK**

**ANNE NAGEL • LINDA PERRY**  
**CRAIG REYNOLDS • GORDON**  
**OLIVER • JOSEPH CREHAN**  
Directed by William Clemens  
A First National Picture



WIN \$50.00 IN AWARD!—DRAWING BETWEEN 8:30 and 9:00  
GET YOUR PROXY CARD AT MATINEE

## Alpine & Rex THEATRES

Main Street, Marlinton, W. Va.

Sec. 562, P. L. & R.

Program Starting June 26, 1937

REX THEATRE

Saturday and Sunday, June 26 and 27

**SIMONE SIMON**

... greater than you ever  
dreamed... in the role  
she was born to play!

**JAMES STEWART**

**JEAN HERSHOLT**  
**GREGORY RATOFF**  
**GALE SONDERGAARD**  
**J. EDWARD BROMBERG**



## 'SEVENTH HEAVEN'

MATINEES 2:30 — ADMISSION 10c and 15c

EVENING SHOWS 7:00 — ADMISSION 15c and 20c

Thursday July 2nd 1937 BANK NITE

*What a laugh!*

"I've got clothes...jewels  
...everything money can  
buy...and an ache in my  
heart there isn't enough  
sable in the world to cover!"

**"I'M A RICH MAN'S WIFE..."**



**"Her Husband Lies"**

with  
GAIL PATRICK · RICARDO CORTEZ

SELECTED SHORT SUBJECTS  
YOU HAVE UNTIL FRIDAY NOON TO CLAIM MONEY  
IF YOU BUY MATINEE TICKET

# Alpine & Rex

## THEATRES

Main Street, Marlinton, W. Va.

Sec. 562, P., L. & R.

Program Starting July 2, 1937

### REX THEATRE

Saturday and Sunday, July 3 and 4



**CURED OUT THEIR HEARTS IN GOLDEN SONG**

The sweethearts of "Rose Marie" in their finest screen triumph!

JOHN BARRYMORE  
Rosette  
MACDONALD  
NELSON EDDY  
MAYTIME

SELECTED SHORT SUBJECTS  
MATINEE 10c and 15c  
EVENING 15c and 20c

Thursday, July 8, 1937

*What a laugh!*

"I've got clothes...jewels...everything money can buy...and an ache in my heart there isn't enough sable in the world to cover!"

**"I'M A RICH MAN'S WIFE..."**



***Her Husband Lies***

with  
GAIL PATRICK · RICARDO CORTEZ

SELECTED SHORT SUBJECTS  
YOU HAVE UNTIL FRIDAY NOON TO CLAIM MONEY,  
IF YOU BUY MATINEE TICKET

# Alpine & Rex

THEATRES

Main Street, Marlinton, W. Va.

Sec. 562, P., L. & R.

Program Starting July 2, 1937

REX THEATRE

Saturday and Sunday, July 3 and 4

**SCORED OUT  
THEIR HEARTS IN  
GOLDEN SONG**



The sweethearts of "Rose Marie" in their finest screen triumph!

**JOHN BARRYMORE**  
*Jeanette*  
**MacDONALD**  
**NELSON EDDY**  
**MAYTIME**

SELECTED SHORT SUBJECTS  
MATINEE 10c and 15c  
EVENING 15c and 20c

Thursday, July 15 — Bank Night

A THRILL WITH EVERY  
CLICK OF THE METER!



**'MIDNIGHT  
TAXI'**

A woman in a man's  
world of crime... and  
the man who was sworn  
to get her! Fearless,  
relentless enemies...  
till love comes to them  
in a hail of bullets!

with  
**BRIAN DONLEVY**  
**FRANCES DRAKE**  
**ALAN DINEHART**  
**SIG RUMANN**  
**GILBERT ROLAND**

SELECTED SHORT SUBJECTS  
YOU HAVE UNTIL FRIDAY NOON TO CLAIM MONEY IF  
YOU BUY MATINEE TICKET

# Alpine & Rex

THEATRES

Main Street, Marlinton, W. Va.

SEC. 562, P. L. & R.

Program Starting July 9, 1937

Sat. and Sun., July 10 and 11

— REX THEATRE —



Just because he's her hand-  
some butler, can she call him her  
"Personal Property"?

**HARLOW  
TAYLOR**

**"Personal  
Property"**

REGINALD OWEN

SELECTED SHORT SUBJECTS

MATINEE—10c and 15c

EVENING—15c and 20c

Thursday, July 22 **BANK NIGHT**

*They didn't want to...*

...but it snowed and snowed  
...and they were just  
forced to stay in that cozy  
mountain lodge... for  
days and days!



**DON AMECHE and ANN SOTHERN**

**'FIFTY ROADS  
TO TOWN'**

ALL OF THEM SNOWBOUND...HOORAY!



SLIM SUMMERVILLE  
JANE DARWELL  
JOHN QUALEN  
DOUGLAS FOWLEY  
ALLAN LANE  
ALAN DINEHART  
STEPIN FETCHIT

SELECTED SHORT SUBJECTS  
YOU HAVE UNTIL FRIDAY NOON TO CLAIM MONEY  
IF YOU BUY MATINEE TICKET

# Alpine & Rex

**THEATRES**

Main Street, Marlinton, W. Va.

SEC. 562, P. L. & R.

**Program Week of July 16th, 1937**

**Saturday and Sunday, July 17, 18**  
**REX THEATRE**



SELECTED SHORT SUBJECTS

Matinee 10c and 15c

Evening 15c and 20c

SUNDAY and MONDAY, AUG. 8 and 9

THE WORLD IS MINE TONIGHT...

... he sang as his magic voice stole into the heart of a golden girl and imprisoned her with its enchantment! A glorious romance with glorious music... packed with excitement, thrills and breath-taking climaxes!



COMEDIES

NEWS

Thursday — BANK NIGHT

# Alpine & Rex

## THEATRES

Main Street, Marlinton, W. Va.

SEC. 562. P. L. & R.

Program Week of August 3rd, 1937

TUESDAY and WEDNESDAY, AUG. 3 and 4



SELECTED SHORT SUBJECTS

Chapter 5 of "JUNGLE JIM"

REX THEATRE  
SATURDAY and SUNDAY, AUG. 14 and 15

# SING AND BE HAPPY

ANTHONY MARTIN  
LEAH RAY  
JOAN DAVIS  
HELEN WESTLEY  
ALLAN LANE  
DIXIE DUNBAR

The hit... laughs  
the hit... to sing  
everybody sing  
everybody happy

on a... these  
tuning tunes...  
What a beautiful  
beginning  
Travelin' Light  
Sing and Be Happy  
and other hits by  
Sidney Clare and Harry Akst



SELECTED SHORT SUBJECTS  
Matinees Saturday and Sunday 2:30  
Evening Saturday 7:00 — Sunday 9:00  
Evening Admission 15c and 20c — Matinee 10c and 15c

THURSDAY — BANK NIGHT — "MELODY FOR TWO"

# Alpine & Rex

THEATRES

Main Street, Marlinton, W. Va.

SEC. 562, P. L. & R.

Program Week of August 8th, 1937

SUNDAY and MONDAY, AUG. 8 and 9



Matinee 2:30 P. M. — Admission 10c and 20c  
Evening Show 9:00 P. M. — Admission 15c and 25c  
SELECTED SHORT SUBJECTS

REX THEATRE

SATURDAY and SUNDAY, AUG. 21 and 22



"KID GALAHAD"

—with—

Edw. G. ROBINSON - Bette DAVIS

SELECTED SHORT SUBJECTS

Matinees Saturday and Sunday 2:30

Evening — Saturday 7:00 — Sunday 9:00

Evening Admission 15c and 20c — Matinee Admission 10c and 15c

Thursday — BANK NIGHT — "23 1/2 HOURS LEAVE"

# Alpine & Rex

THEATRES

Main Street, Marlinton, W. Va.

SEC. 562, P. L. & R.

Program Week of August 15th, 1937

SUNDAY and MONDAY, AUG. 15 and 16



Matinee 2:30 P. M. — Admission 10c and 20c

Evening Show 9:00 P. M. — Admission 15c and 25c

SELECTED SHORT SUBJECTS

SATURDAY and SUNDAY, SEPTEMBER 4 and 5

**SING!**

**SWING!**

Mad melody soars  
high as foot-free Fred  
and Ginger scatter  
star dust on the  
palpitating  
U.S.A.



SELECTED SHORT SUBJECTS

Matinee Saturday and Sunday 2:30

Evening—Saturday 7:00; Sunday 9:00

Evening Admissions 15c and 20c—Matinee Admission 10c and 15c

# Alpine & Rex

**THEATRES**

**Main Street, Marlinton, W. Va.**

SEC. 562, P. L. & R.

Program Week of August 29, 1937

**SUNDAY and MONDAY, AUGUST 29 and 30**

Shake that swing off your shoes...everybody's "JAMMIN'" bowl!

Adolph Zukor presents

## "TURN OFF THE MOON"

A Paramount Picture with  
**CHARLIE RUGGLES**  
Eleanor Whitney, Johnny Downs  
Kenneth Baker, Phil Harris and his Band

Hot music! Hot rhythms!

Matinee 2:30 P. M.—Admission 10c and 20c

Evening Show 9:00 P. M.—Admission 15c and 25c

SELECTED SHORT SUBJECTS

REX THEATRE  
SATURDAY AND SUNDAY, SEPTEMBER 11 AND 12



**TWO AGAINST THE WORLD**  
Their glorious romance  
rocked the foundations of  
an Empire! Lovely Myrna  
in Gable's arms... the  
year's biggest thrill!

M-G-M's MIGHTIEST DRAMA!  
**CLARK GABLE**  
*Myrna* **LOY**  
in **PARNELL**  
WITH EDNA MAY OLIVER  
EDMUND GWENN • ALAN MARSHAL  
DONALD CRISP • BILLIE BURKE

SELECTED SHORT SUBJECTS  
Matinees Saturday and Sunday 2:30 P. M.  
Evening — Saturday 7:00; Sunday 9:00  
Evening Admission 15c and 20c — Matinee Admission 10c and 15c

# Alpine & Rex

THEATRES

Main Street, Marlinton, W. Va.

SEC. 562, P. L. & R.

Program Week of Sept. 5th, 1937

SUNDAY AND MONDAY, SEPT. 5 AND 6



It's Sparking  
Sky-Larking  
Romantic Fun!

Admiral Zerk presents  
**CLAUDETTE COLBERT**  
in  
**"I MET HIM IN PARIS"**  
with Melvyn Douglas • Robert Young  
Produced and Directed by Wesley Ruggles

Matinee 2:30 P. M. — Admission 10c and 20c  
Evening Show 9:00 P. M. — Admission 15c and 25c  
SELECTED SHORT SUBJECTS

REX THEATRE

SAT. and SUN., SEPT. 11 and 12

NO MAN EVER PAID A GREATER  
PRICE... FOR LOVE!



CLARK  
**GABLE**  
*Myrna*  
**LOY**

The romance that  
rocked the founda-  
tions of an em-  
pire... now lives  
on the screen!

**PARNELL**

with  
EDNA MAY OLIVER • EDMUND GWENN  
ALAN MARSHAL • DONALD CRISP  
BILLIE BURKE • Based on the Broadway Stage Show  
written by Elsie T. Schaeffer, Screen Play by John Van Druten  
and S. N. Behrman, Directed by John M. Stahl

2 GREAT  
STARS...  
AND WHAT  
A CAST!

SELECTED SHORT SUBJECTS

Matinees Saturday and Sunday 2:30 P. M.  
Evening—Saturday 7 P. M.; Sunday 9 P. M.  
Evening Admission—15c and 20c  
Matinee Admission—10c and 15c

# Alpine & Rex

THEATRES

Main Street, Marlinton, W. Va.

SEC. 562, P. L. & R.

Program Week of September 12, 1937

SUN. and MON., SEPT. 12 and 13

THE STRANGEST CASE THAT EVER  
ROCKED A HALL OF JUSTICE!



ONE MILE from HEAVEN

with  
CLAIRE TREVOR  
SALLY BLANE  
DOUGLAS FOWLEY  
FREDI WASHINGTON  
and  
BILL ROBINSON

Matinee 2:30 P. M.—Admission 10c and 20c

Evening Show 9 P. M.—Admission 15c and 25c

SELECTED SHORTS

REX THEATRE  
Saturday and Sunday, Sept. 25 and 26

**GREATEST OF  
ALL DRAMAS  
OF THE SEA!**

Adventure storming  
with epic sweep over  
half the world! Two  
years to make! A  
fortune to film! A  
matchless cast of stars!



Warner BAXTER Wallace BEERY  
*in*  
**SLAVE SHIP**

SELECTED SHORT SUBJECTS

Matinees Saturday and Sunday, 2:30 P. M.

Evening Saturday 7:00 — Sunday 9:00 P. M.

Evening Admission 15c and 20c — Matinee Admission 10c and 15c

**Alpine & Rex  
THEATRES**

Main Street, Marlinton, W. Va.

SEC. 562, P. L. & R.

Program Week of Sept. 19th, 1937

Sunday and Monday, Sept. 19 and 20

**AN ETERNITY IN ONE  
STOLEN KISS...!**

**THE DAWN COMES UP LIKE THUNDER...**  
on the greatest love story of the century!



**KAY FRANCIS  
ERROL FLYNN**

*In Warner Bros.*  
**Another Dawn**

*with* JAN HUNTER  
FRIEDA INESCORT



*Tonight Is Ours...*

Matinee 2:30 P. M. — Admission 10c and 20c

Evening Show 9:00 P. M. — Admission 15c and 25c

SELECTED SHORT SUBJECTS

REX THEATRE  
Saturday and Sunday, October 2 and 3



# Captains Courageous

WITH—  
*Freddie*  
**BARTHOLOMEW  
SPENCER TRACY  
LIONEL BARRYMORE  
MELVYN DOUGLAS**

Challenging the supremacy of "Mutiny on the Bounty"... comes the new titan of all screen adventure! Kipling's genius... M-G-M's production wizardry... combine to bring you your finest experience in the theatre!

## THRILLS!

SEE—Harvey, the boy, falls off the liner into the sea!  
SEE—The rescue!  
SEE—Race between the "We're Here" and "Jenny Cushman!"  
SEE—Return to sweet hearts ashore!



## SELECTED SHORT SUBJECTS

Matinee Saturday and Sunday 2:30 P. M.  
Evening—Saturday 7 P. M.; Sunday 9 P. M.  
Evening Admission — 15c and 20c  
Matinee Admission — 10c and 15c

# Alpine & Rex

THEATRES

Main Street, Marlinton, W. Va.

SEC. 562, P. L. & R.

Program Week of October 3rd, 1937

Sunday and Monday, October 3 and 4



Thrills... and heart-throbs, too... in Wally's swellest hit!

with UNA MERKEL  
ERIC LINDEN  
JUDITH BARRETT  
BETTY FURNESS  
TED HEALY

Matinee 2:30 P. M. — Admission 10c and 20c  
Evening Show 9:00 P. M. — Admission 15c and 25c

SELECTED SHORTS

REX THEATRE  
Sat. and Sun., October 16 and 17



starring **SHIRLEY  
TEMPLE**  
and **VICTOR  
M. LAGLEN**

with **C. AUBREY SMITH  
JUNE LANG  
MICHAEL WHALEN  
CESAR ROMERO  
CONSTANCE COLLIER  
DOUGLAS SCOTT**

Directed by **JOHN FORD**,  
Academy Award Winner  
Samuel F. Brumby in Charge of Production

SELECTED SHORT SUBJECTS  
Matinees Saturday and Sunday at 2:30 P. M.  
Evening—Saturday 7:00 P. M.—Sunday 9 P. M.  
Evening—Admission 15c and 20c  
Matinee—Admission 10c and 15c

# Alpine & Rex

**THEATRES**

Main Street, Marlinton, W. Va.

SEC. 562, P. L. & R.

Program Week of October 10, 1937

Sun. and Mon., October 10 and 11



Matinee 2:30 P. M.—Admission 10c and 20c  
Evening Show 9:00—Admission 15c and 25c  
SELECTED SHORTS

REX THEATRE  
SATURDAY AND SUNDAY, OCTOBER 30 AND 31



CLARK GABLE JEAN HARLOW

From the brilliant authors of "San Francisco"... comes this colorful, glamorous drama of The Sport of Kings! Filmed against the exciting backgrounds of famed Saratoga and luxurious Miami—it is the first race track romance to take rank with 1934's memorable "Broadway Bill."

**SARATOGA**



SELECTED SHORT SUBJECTS

Matinees Saturday and Sunday at 2:30 P. M.  
Evening—Saturday 7:00 P. M. — Sunday 9 P. M.  
Evening—Admission 15c and 20c  
Matinee — Admission 10c and 15c

# Alpine & Rex

## THEATRES

Main Street, Marlinton, W. Va.

SEC. 562, P. L. & R.

Program Week of October 31st, 1937

SUNDAY AND MONDAY, OCT. 31 AND NOV. 1

FLAMING LOVE-DRAMA AGAINST THE BACKGROUND  
OF SPAIN'S CIVIL WAR!



Matinee 2:30 P. M. — Admission 10c and 20c  
Evening Show 9:00 — Admission 15c and 25c

SELECTED SHORTS

REX THEATRE  
SATURDAY AND SUNDAY, NOVEMBER 13 AND 14

Heart Buck's novel now springs to life! It's coming!  
Most eagerly awaited film in history—you will  
get the thrill of a lifetime!  
Never again such a show  
on stage or screen!



The drama, the love story, the thrill, it's here like the book!

3 years to produce! It cost a fortune! Thousands in its cast!

WALTER CONNOLLY  
Tells Le...  
Charles

THE BIGGEST of all M-G-M HITS!

STARRING  
**GOOD EARTH**  
**PAUL MUNI**  
**LUISE RAINER**

M. P. Award Winner for 1937!

SELECTED SHORT SUBJECTS  
Matinee Saturday and Sunday 2:30 P. M.  
Evening—Saturday 7 P. M.—Sunday 9 P. M.  
Evening Admission — 15c and 20c  
Matinee Admission — 10c and 15c

# Alpine & Rex

## THEATRES

Main Street, Marlinton, W. Va.

SEC. 562  
P., L. & R.

Program Week of November 7th, 1937

SUNDAY AND MONDAY, NOVEMBER 7 AND 8

THEY FOUGHT FOR LOVE OF A DAME  
... AND THE HATE OF EACH OTHER!

**SAN  
QUENTIN**



PET  
**O'BRIEN**  
**HUMPHREY BOGART**  
ANN SHERIDAN • BARTON MACLARE  
A First National Picture - Directed by  
Lloyd Bacon - Produced by Warner Bros.

Matinee 2:30 P. M. — Admission 10c and 20c

Evening Show 9 P. M.—Admission 15c and 25c

SELECTED SHORTS

REX THEATRE  
SATURDAY AND SUNDAY, NOVEMBER 13 AND 14



It's here at last!  
...the truly great  
picture M-G-M  
spent a fortune  
to make from  
Pearl Buck's  
Pulitzer Prize  
Novel! Thrills,  
drama beyond  
compare!  
2,000 in cast!

**THE  
GOOD  
EARTH**

ACADEMY  
AWARD  
WINNERS...  
Together now  
in their great-  
est triumph!

PALE *Starring* ROUSE  
**MUNI-RAINER!**

with  
Walter CONNOLLY  
Tilly LOSCH



Matinee Saturday and Sunday at 2:30 P. M.  
Evening Saturday 7:00 P. M. — Sunday 9 P. M.  
Evening — Admission 15c and 20c  
Matinee — Admission 10c and 15c

# Alpine & Rex THEATRES

Main Street, Marlinton, W. Va.

SEC. 562  
P., L. & R.

Program Week of November 14th, 1937

SUNDAY AND MONDAY, NOVEMBER 14 AND 15

**BETWEEN  
TWO  
WOMEN**

with  
**Franchot Tone**  
**Maureen O'Sullivan**  
**Virginia Bruce**

**GOODBYE TO THE  
WOMAN HE LOVED!**

...to be loyal to  
a woman  
he hated!  
M-G-M's great  
successor to  
"Men in White"



Matinee 2:30 P. M. — Admission 10c and 20c  
Evening Show 9:00 P. M. — Admission 15c and 25c

SELECTED SHORTS

REX THEATRE  
SATURDAY and SUNDAY, NOV. 20 and 21

THE GAYEST SPOOKS YOU EVER SAW

...out for no good—  
and plenty of it! It's  
the surprise laugh  
hit of the year!



SEE...  
Glamorous Con-  
nie walk out of  
an evening gown  
into invisibility!  
A driverless car  
do 90 miles an  
hour!

SELECTED SHORTS

Matinee Saturday and Sunday at 2:30 P. M.  
Evening—Saturday 7 P. M. — Sunday 8:30 P. M.  
Evening Adm. 15c and 20c — Matinee Adm. 10c and 15c

# Alpine & Rex

## THEATRES

Main Street, Marlinton, W. Va.

SEC. 562  
P., L. & R.

Program Week of November 21st, 1937

SUNDAY and MONDAY, NOV. 21 and 22



Matinee 2:30 P. M. — Admission 10c and 20c

Evening Show 8:30 P. M. — Admission 15c and 25c

SELECTED SHORTS

— REX THEATRE —  
SATURDAY and SUNDAY, NOVEMBER 27 and 28



**JACK BENNY  
ARTISTS  
and MODELS**

WHAT A PICTURE, FOLKS!

The world's most beautiful girls... the world's topnotch song, dance and laugh artists!

• IDA LUPINO  
• RICHARD ARLEN  
• GAIL PATRICK  
• BEN BLUE • JUDY CANOVA  
• THE TACHT CLUB BOYS  
• LOUIS ARMSTRONG  
and starring by  
**MARTHA RAYE**

Matinee Saturday and Sunday at 2:30 P. M.  
Evening Saturday 7:00 P. M. — Sunday 8:30 P. M.  
Evening Adm. 15c and 20c — Matinee Adm. 10c and 20c  
SELECTED SHORT SUBJECTS

THURSDAY, DECEMBER 2 — BANK NIGHT



**HIT STARS! HIT TUNES! HIT STORY!**

**THE HIT PARADE**

starring

**FRANCIS LANGFORD • PAUL REGAN**

# Alpine & Rex THEATRES

Main Street, Marlinton, W. Va.

SEC. 562  
P., L. & R.

Program Week of November 28th, 1937

SUNDAY and MONDAY, NOVEMBER 28 and 29



**AMAZING!  
DIFFERENT!  
UNIQUE!**

ROBERT MONTGOMERY • ROSALIND RUSSELL

**"NIGHT MUST FALL"**

with DAME MAY WHITTY • ALAN MARSHAL  
MERLE TOTTENHAM • KATHLEEN HARRISON  
Directed by Richard Thorpe • Produced by Hunt Stromberg

Matinee 2:30 P. M. — Admission 10c and 20c  
Evening Show 8:30 P. M. — Admission 15c and 25c  
SELECTED SHORTS

Friday and Saturday, May 6 and 7  
DOUBLE FEATURE

They laughed at his wild heroics on the screen  
... but they changed their tune when he faced  
the guns of gangland on the open range.

# GEORGE O'BRIEN in **HOLLYWOOD COWBOY**

with  
CECILIA PARKER

RKO  
Radio  
Picture



A NEW KIND OF  
WESTERN THRILLER!

also  
"HIDEAWAY" with FRED STONE

# ALPINE THEATRE

Main Street, Marlinton, W. Va.

SEC. 562  
P. L. & R.

Program Week of May 1st, 1938

Two Days!

Two Days!

Sunday and Monday, May 1 and 2


THE MIGHTIEST  
ENTERTAINMENT THAT  
EVER THRILLED YOU!

**Rosallie** STARRING  
**NELSON EDDY** **ELLENOR POWELL**

featuring  
**FRANK MORGAN**  
**EDNA MAY OLIVER**  
Directed by W. S. VAN DYKE in  
A Metro-Goldwyn-Mayer Picture

Saturday, June 22—One Day Only

*Yes*  
IT'S HIS  
FUNNIEST  
PICTURE!



*Will Rogers*  
**LIFE  
BEGINS  
at 40**

ROCHELLE HUDSON  
RICHARD CROMWELL  
GEORGE BARBIER  
JANE DARWELL  
SLIM SUMMERVILLE

FOX

MATINEE AT 3 O'CLOCK—ADMISSION 10c & 20c

NIGHT—10c & 30c

# SENECA

THEATRE

Marlinton, W. Va.

Program Week of June 17th, 1935

Monday and Tuesday, June 17 and 18

HELEN HAYES  
ROBERT MONTGOMERY



bring an unforgettable love-  
thrill to the screen now in  
**Vanessa**  
HER LOVE STORY

ADDED COMEDY

ADMISSION — 10c & 25c

Mon. and Tues., July 15 and 16

DEAD BY DAY..  
ALIVE BY NIGHT



A Detective Battles Unseen  
Horror to solve Weird Crime!

LIONEL  
BARRYMORE

MARK  
OF THE  
VAMPIRE

with  
ELIZABETH ALLAN  
LIONEL ATWILL  
EBELA LUGOSI  
JEAN HERSHOLT



PLEASE! Don't  
tell the ending  
to your friends.



BEYOND  
BELIEF!

A Beautiful Girl Enslaved  
by a Sinister Weird Thing!

ADMISSION—10c & 25c

# SENECA

THEATRE

Marlinton, W. Va.

Program Week of July 8th, 1935

Two Days!

Two Days!

Mon. and Tues., July 8 and 9

VICTOR HERBERT'S

## "NAUGHTY MARIETTA"

Haunting Melodies! Nights of  
Love! Virile adventure and gay ro-  
mance as Marietta defies conven-  
tions to live her own life of love!

*Jeannette*  
Big New  
Idea in  
Melody-  
Drama!

MACDONALD  
Nelson EDDY

ADMISSION—10c & 25c

Fri. and Sat., Aug. 30 and 31



**JOAN CRAWFORD**  
**ROBERT MONTGOMERY**  
No wonder the whole world wants to see you together again as the gay sweethearts who laughed at love—until it happened to them!  
with **CHARLIE RUGGLES**  
**FRANCHOT TONE · EDNA MAY OLIVER**  
**NO MORE LADIES**

MATINEE SATURDAY AT 3 O'CLOCK  
ADMISSION—MATINEE 10c & 20c; NIGHT 10c & 30c

# SENECA

THEATRE

Marlinton, W. Va.

Program Week of August 24th, 1935

Sat. and Sun., Aug. 24 and 25

Laugh your fill at Will!



**A NEW HIGH in HILARITY—**  
*Will* **ROGERS** *even for him!*  
**Doubting Thomas**  
with **BILLIE BURKE**  
**ALISON SKIPWORTH**  
**STERLING HOLLOWAY**  
**GAIL PATRICK**  
**FRANCES GIANT**

MATINEE SATURDAY AT 3 O'CLOCK—ADMISSION 10c & 20c

NIGHT ADMISSION—10c & 30c

SUNDAY SHOW 1 to 5 P. M.—ADMISSION 10c & 20c

NIGHT SHOW AT 9:15 P. M.—ADMISSION 10c & 30c

THURSDAY and FRIDAY, JAN. 9 and 10

## STRIKE UP THE BAND!

Hang up the Flags!...

Stand up and Shout!...



with  
**JAMES CAGNEY**  
**PAT O'BRIEN**

In Cast of  
Thousands!



also SELECTED SHORT SUBJECTS

Show Starts at 6:00 P.M. — Adm. 10c and 15c

# ALPINE

THEATRE

MARLINTON, W. VA.

FRED IDEN, Mgr.

SATURDAY, JANUARY 4—Double Feature

**Swift speed and  
terrific thrills!**

**Tim M'COY**



"SQUARE  
SHOOTER"



Adventure  
exactly  
as you  
like it!

—Added Feature—



Free Chance to Win \$1 to \$9 — Adm. 10c and 15c  
Show Starts at 1 P.M. to 12 M.

THURSDAY AND FRIDAY, JANUARY 16 AND 17



**TRANSATLANTIC  
TUNNEL**

NEW YORK TO LONDON

**RICHARD DIX  
LESLIE BANKS**

MADGE EVANS • HELEN VINSON  
C. AUBREY SMITH • BASIL SYDNEY

*New York to London  
THE MOST GIGANTIC  
FEAT IN ALL HISTORY*

Special portrayals by  
GEORGE ARLISS • WALTER HUSTON

SELECTED SHORT SUBJECTS

Show Starts at 6 P. M.

Admission 10c and 15c

# ALPINE

THEATRE

MARLINTON, W. VA.

FRED IDEN, Mgr.

Program Week of Jan. 11th, 1936

*To May 36*  
SATURDAY, JAN. 11—BIG DOUBLE FEATURE

Meet **PERRY MASON**,  
New King of Crime-Hunters!

THE CASE OF THE

**HOWLING  
DOG**

WARREN WILLIAM  
MARY ASTOR

Get Set for Thrills When This Human  
Bloodhound Takes up the Scent!

— also —

"GAY BUCKAROO" with Special Cast

FREE! — CHANCE TO WIN \$1.00 TO \$9.00\*

Admission 10c and 15c

Show Starts at 1 P. M. to 12 P. M.

THURSDAY and FRIDAY, JANUARY 23 and 24

THE BIG PARADE OF THE HIGH SEAS

# BORN FOR GLORY

BETTY BALFOUR • BARRY MCKAY  
JOHN MILLS



THE GREATEST STORY  
OF YOUTHFUL HEROISM  
SINCE NATHAN HALE

...who said, "I only regret  
that I have but one life  
to lose for my country."

SELECTED SHORT SUBJECTS

Show Starts at 6 P. M.—Admission 10c and 15c

Our Weekly Program

# ALPINE

THEATRE

MARLINTON, W. VA.

FRED IDEN, Mgr.

Program Week of January 18th, 1936

SATURDAY, JANUARY 18—ONE DAY ONLY

BIG DOUBLE FEATURE

FLAMING HEARTS

AND FLAMING ACTION!

"'Neath Arizona  
Skies"

—with—

John Wayne



—also—

"BAD BOY" with JAMES DUNN

FREE! — CHANCE TO WIN \$1.00 to \$9.00

SHOW STARTS AT 1 P. M. TO 12 P. M.

• FREE TO OUR PATRONS •

Saturday, March 14—One Day Only



Follow your favorite from flying hoofs to pounding wheels! Watch him win a girl by smashing every record for speed and thrills!

**George O'BRIEN**  
in  
**WHISPERING SMITH Speaks**



with  
• IRENE WARE •  
KENNETH THOMSON

SELECTED SHORT SUBJECTS

SHOW STARTS AT 1 P. M.

ADMISSION—10c and 15c

# ALPINE

THEATRE

MARLINTON, W. VA.

FRED IDEN, Mgr.

Program Week of March 8th, 1936

Sun. and Mon., March 8 and 9



**THE BIG BROADCAST OF 1936**

with Jack Oakie, Burns & Allen, Lyda Roberti, Wendy Barrie, Henry Wadsworth plus specialties by Bing Crosby, Amos 'n' Andy, Ethel Merman, Mary Boland, Charlie Ruggles and Bill Robinson.

A dashing musical comedy packed jam full of gallivanting gals and the men who man the mikes

SUNDAY MATINEE 1 to 3 P. M.

SUNDAY NIGHT AT 9 P. M.—DOORS OPEN 8:45 P. M.

MONDAY NIGHT AT 6 P. M.

ADMISSION—10c and 15c

Saturday, March 28—One Day Only

**HIS GUNS ROARED A CHALLENGE  
TO AN OUTLAW EMPIRE!**

Meet the "one-man posse"—the man with the fastest trigger-finger in the West! See him shoot his way out of an outlaw camp and into the heart of a beautiful girl



**"NEVADA"**

—with—

**Buster Crabbe**

He stakes his life and love against his valiant shooting!

SELECTED SHORT SUBJECTS

SHOW STARTS AT 1 P. M.

ADMISSION—10c and 15c

A GOOD SHOW IN A GOOD TOWN

**ALPINE**  
THEATRE

MARLINTON, W. VA.

FRED IDEN, Mgr.

Program Week of March 22, 1936

Sun. and Mon., March 22 and 23

**AN AMERICAN CAVALCADE OF COURAGE!**



The Romantic Drama  
of a Romantic Generation!  
**MARGARET SULLIVAN**

**"SO RED  
THE ROSE"**  
WALTER CONNOLLY  
Randolph Scott

—also—

SELECTED SHORT SUBJECTS

SUNDAY MATINEE 1 to 3 P. M.

SUNDAY NITE AT 9 P. M.—DOORS OPEN AT 8:45 P. M.

MONDAY NITE AT 6 P. M.

ADMISSION—10c and 15c

Saturday, April 4—One Day Only  
BIG DOUBLE FEATURE

FLAMING HEARTS  
AND FLAMING ACTION!

"Bar-20 Rides  
Again"

with Wm. Boyd



— also —

Take THE LAUGH-CURE!

EDWARD EVERETT HORTON in



with  
IRENE HERVEY  
JACK LARUE



he takes you on the  
laugh-love-and-thrill  
spree of your life!

SHOW STARTS AT 1 P. M.

ADMISSION 10c and 15c

"A Good Show In A Good Town"

# ALPINE

THEATRE

Marlinton, W. Va.

FRED IDEN, Manager

Sun. and Mon., March 29 and 30  
BIG DOUBLE SHOW

ALL ASHORE FOR THE YEAR'S MOST JOYOUS MUSICAL!



— also —

"THE AFFAIRS OF SUSAN"  
with ZASU PITTS

FOX NEWS

SUNDAY MATINEE 1 to 3 P. M.  
SUNDAY NIGHT AT 9 P. M.  
MONDAY NIGHT AT 6 P. M.  
ADMISSION—10c and 15c

Saturday, April 25

One Day Only

BIG DOUBLE FEATURE



— also —



Show Starts at 1 P. M.

Admission 10c and 15c

"A GOOD SHOW IN A GOOD TOWN"

# ALPINE

THEATRE

Marlinton, W. Va.

FRED IDEN, Manager

Program Week of April 19th, 1936

Sunday and Monday, April 19 and 20



FOX NEWS

SELECTED SHORT SUBJECTS

Sunday Matinee at 1 and 3 P. M.— Sunday Night at 9 P. M.

Monday Night at 6 P. M. — Admission 10c and 15c

Saturday, May 2—One Day Only

BIG DOUBLE FEATURE

The Screen Unleashes a Blast of Dynamite!

# YOU MAY BE NEXT!

THE BATTLE CRY OF THE NATION  
—“BLAST 'EM INTO ETERNITY!”

with  
Ann Sothorn • Lloyd Nolan  
Douglass Dumbrille

— also —

One-Man Man-Hunt  
... outdoor romance as  
only Zane Grey writes it!

Adolph Zukor presents

## Zane Grey's “DRIFT FENCE”

with  
LARRY “Buster” CRABBE  
KATHERINE DeMILLE  
TOM KEENE • BENNY BAKER  
• GLENN ERIKSON •

SHOW STARTS AT 1 P. M.

ADMISSION—10c and 15c

“A GOOD SHOW IN A GOOD TOWN”

# ALPINE

## THEATRE

MARLINTON, W. VA.

FRED IDEN, Mgr.

Program Week of April 26, 1936

Sun. and Mon., April 26 and 27

A thrill-packed fiesta  
of melody, romance  
and adventure...!

Adolph Zukor presents

## “ROSE OF THE RANCHO”

A Paramount Picture with  
JOHN BOLES  
GLADYS SWARTHOUT  
Willie Howard • Herb Williams

FOX NEWS

SELECT SHORT SUBJECT

SUNDAY MATINEE 1 and 3 P. M.—SUNDAY NITE 9 P. M.

MONDAY NITE 6 P. M.

ADMISSION—10c and 15c

Saturday, May 9—One Day Only

BIG DOUBLE FEATURE

Thundering Through New Thrills  
With Thundering, Two-Gunned Tim!

**TIM  
MCCOY**

"RIDING  
WILD"

Break-neck  
ADVENTURE



**TWO-GUNNED, TWO-FISTED!**

— also —

Hi Jinks  
' and  
Hilarity  
on the  
Hi Seas!

**HERE COMES  
TROUBLE**



PAUL KELLY  
ARLINE JUDGE  
MONA BARRIE  
GREGORY RATOFF

A JOY SHIP CRUISE WITH  
A JAIL-BIRD CREW...



SHOW STARTS AT 1 P. M.

ADMISSION—10c and 15c

"A GOOD SHOW IN A GOOD TOWN"

**ALPINE**

**T H E A T R E**

MARLINTON, W. VA.

FRED IDEN, Mgr.

Program Week of May 3rd, 1936

Sun. and Mon., May 3 and 4

BIG DOUBLE FEATURE

REALLY,  
I'M WORTH  
MILLIONS!

YOU'RE AN AWFUL LIAR—  
BUT PLEASE DON'T STOP!



Herbert  
**MARSHALL**

Jean  
**ARTHUR**

in a grand new romantic comedy

**IF YOU COULD ONLY COOK**

with LEO CARRILLO

Directed by William A. Seiter a COLUMBIA PICTURE

— also —

**"GENTLEMEN ARE BORN"**  
with Franchot Tone

SUNDAY MATINEE 1 and 3 P. M.—SUNDAY NITE 9 P. M.  
MONDAY NITE 6 P. M. ADMISSION—10c and 15c

## MARLINTON MERCHANTS SAVE YOU MONEY!

Shop With Them and Get Your Ticket For  
MERCHANTS NIGHT!

### O. K. GROCERY

The Place to Buy Fresh Green Vegetables

### JOHNSON'S RESTAURANT

Chicken Dinner Every Sunday

### MARLINTON ELECTRIC SHOE SHOP

"Friend of the Old Shoe"

### P. C. CURRY

If It Is To Eat — We Have It

### WILBER SHARP'S POOL ROOM

Delicious Sandwiches and Beer

### THE WAFFLE SHOP

Watch For the Opening in Our New Location

### M a c Q U E E N ' S

Everything for "My Lady" For Christmas

### ROYAL DRUG STORE

Give Him a Pen and Pencil Set This Xmas

### S H A N K L I N ' S

"Store for the Lad and His Dad"

### TOLL HOUSE RESTURANT & SERVICE STATION

Gas With Us — Good Eats and Cold Drinks

### TOM WISEMAN'S BARBER SHOP

The Men's Beauty Shop

### MARLINTON CLEANERS

You've Tried the Rest, Now Try the Best

### ANNETTE BEAUTY SHOP

Holiday Specials in Permanent Waves

### THE MEN'S SHOP

Everything From Head to Toe

Don't Forget to Ask For Your MERCHANT TICKET  
Let's Make TUESDAY Night COMMUNITY NIGHT

MERRY XMAS

# Alpine & Rex THEATRES

MAIN STREET, MARLINTON, W. VA.

Sec. 562, P., L. & R.

Program Starting December 19, 1936

## REX THEATRE

SATURDAY and SUNDAY, DECEMBER 19 and 20



EVERYTHING NEW—  
EXCEPT THE DIMPLES!

*Shirley*

# TEMPLE

*in*

# Dimples

FRANK  
MORGAN  
Stepin FETCHIT  
HELEN WESTLEY  
ROBERT KENT



ALSO SELECTED SHORT SUBJECTS

MATINEE 2:30 P. M. — ADMISSION 10c and 20c

EVENTS & ADMISSION

## MARLINTON MERCHANTS SAVE YOU MONEY!

Shop With Them and Get Your Ticket For  
MERCHANTS NIGHT!

### O. K. GROCERY

The Place to Buy Fresh Green Vegetables

### JOHNSON'S RESTAURANT

Chicken Dinner Every Sunday

### MARLINTON ELECTRIC SHOE SHOP

"Friend of the Old Shoe"

### P. C. CURRY

If It Is To Eat — We Have It

### WILBER SHARP'S POOL ROOM

Delicious Sandwiches and Beer

### THE WAFFLE SHOP

Watch For the Opening in Our New Location

### M a c Q U E E N ' S

Everything for "My Lady"

### ROYAL DRUG STORE

Try Our Fountain

### S H A N K L I N ' S

"Store for the Lad and His Dad"

### TOLL HOUSE RESTURANT & SERVICE STATION

Gas With Us — Good Eats and Cold Drinks

### TOM WISEMAN'S BARBER SHOP

The Men's Beauty Shop

### MARLINTON CLEANERS

You've Tried the Rest, Now Try the Best

### ANNETTE BEAUTY SHOP

Holiday Specials in Permanent Waves

### THE MEN'S SHOP

Everything From Head to Toe

Don't Forget to Ask For Your MERCHANT TICKETS.  
Let's Make TUESDAY Night COMMUNITY NIGHT!

♦♦♦♦ A HAPPY NEW YEAR TO ALL! ♦♦♦♦

# Alpine & Rex

## T H E A T R E S

MAIN STREET, MARLINTON, W. VA.

Sec. 562, P., L. & R.

Program Week of December 27th, 1936

### REX THEATRE

SATURDAY and SUNDAY, DEC. 26 and 27



Matinees 2:30 P. M. — Adm. 10c and 20c  
Evening Shows Adm. 35c and 25c

♦♦♦♦ A HAPPY NEW YEAR TO ALL! ♦♦♦♦

MERCHANT NIGHT  
TUESDAY

GET YOUR TICKETS AT:—

O. K. GROCERY

SHANKLIN'S CLOTHING STORE

P. C. CURRY'S GROCERY and HARDWARE

MARLINTON ELECTRIC SHOE SHOP

ANNETTE BEAUTY SHOP

TOM WISEMAN'S BARBER SHOP

MARLINTON CLEANERS and DYERS

TOLL HOUSE RESTAURANT and SERVICE  
STATION

MEN'S SHOP

MacQUEEN'S

WILBER SHARP'S POOL ROOM

JOHNSON'S RESTAURANT

WAFFLE SHOP

# Alpine & Rex

THEATRES

MAIN STREET, MARLINTON, W. VA.

SEC. 562, P., L. & R.

Program Week of January 9 to 16

REX THEATRE

SATURDAY AND SUNDAY, JANUARY 9 AND 10

SHOW of  
SHOWS  
STARRING  
WILLIAM  
POWELL  
MYRNA LOY  
LUISE RAINER

50 STARS  
300 Glorified GIRLS

# THE GREAT IEGFELD

TEN \$6.60  
SHOWS!

MATINEE SATURDAY and SUNDAY, 2:30

Matinee—Admission 10c and 20c—Evening Admission 15c-25c

## MERCHANT NIGHT TUESDAY

GET YOUR TICKETS AT:—  
O. K. GROCERY

SHANKLIN'S CLOTHING STORE

P. C. CURRY'S GROCERY and HARDWARE

MARLINTON ELECTRIC SHOE SHOP

ANNETTE BEAUTY SHOP

TOM WISEMAN'S BARBER SHOP

MARLINTON CLEANERS and DYERS

TOLL HOUSE RESTAURANT and SERVICE  
STATION

MEN'S SHOP

MacQUEEN'S

WILBER SHARP'S POOL ROOM

JOHNSON'S RESTAURANT

WAFFLE SHOP

## Alpine & Rex

THEATRES

MAIN STREET MARLINTON, W. VA.

SEC. 562, P. L. & R.

Program Week of January 9 to 16

REX THEATRE

SATURDAY AND SUNDAY JANUARY 9 AND 10

SHOW OF  
SHOWS  
STARRING  
WILLIAM  
POWELL  
MYRNA LOY  
LUISE RAINER

50  
SING  
300  
DANCING  
GIRLS

# THE GREAT TEGFIELD

TEN 50.00  
SHOWS

MATINEE SATURDAY AND SUNDAY 2:00

Admission—Adults 50c and 25c—Children 25c and 10c

REX THEATRE  
Saturday and Sunday, April 10 and 11

Swing high! Swing low! First you're  
up, then you're down . . . that's love!



Adapted by Zoltan  
**CAROLE LOMBARD**  
**FRED MACMURRAY**

**"SWING HIGH,  
SWING LOW"**

CHARLES BUTTERWORTH - JEAN DIXON  
DOROTHY LAMOUR - HARVEY STEPHENS

Show Starts Saturday at 2:30 P. M., Continuous to 11:30 P. M.  
Mat. Adm. 10c, 20c to 6 P. M.; Eve. Show 15c, 25c; Sun. Mat. 2:30

# Alpine & Rex THEATRES

MAIN STREET, MARLINTON, W. VA.

Sec. 562, P., L. & R.

Program Week of April 11~~th~~, 1937

ALPINE THEATRE  
Sunday and Monday, April 11 and 12



**"PAROLE RACKET"**  
— with —  
**PAUL KELLY  
& ROSALIND KEITH**

FOX NEWS

Matinee Sunday at 2:30 P. M.—Admission 10c and 15c  
Evening Show at 8:30 P. M.—Admission 15c and 20c

REX THEATRE  
Sat. and Sun., June 19 and 20

If you were born under the sign of the Crab, don't let it worry you. You're going to laugh dull care away under the sign of the Bull!



**JOE E. BROWN**

**When's Your Birthday?**

Marion Marsh • Fred Keating • Edgar Kennedy

**A Man with a Big Mouth  
is Coming Into Your Life!**

MATINEE 2:30 P. M.—ADMISSION 10c and 20c

# Alpine & Rex

**THEATRES**

MAIN STREET, MARLINTON, W. VA.

Sec. 562, P., L. & R.

**Program Starting June 19th, 1937**

**Fri. and Sat., June 18 and 19**

DEFYING THE HOODED KILLERS OF THE

## "BLACK LEGION"

**HUMPHREY BOGART**  
DICK FORAN • ERIN O'BRIEN-MOORE  
ANN SHERIDAN • ROBERT BARRAT

No punches pulled,  
no words minced

**AMERICA'S SECRET FRATERNITY OF FIENDS!**

Thursday July 11 1934 BANK NITE

**THERE'S MURDER  
IN THE HEIR!**

Where there's a million dollar  
will...there's someone to kill!  
Watch irrepressible Perry  
Mason unravel the clues of  
his most baffling mystery!

**"THE CASE OF THE  
STUTTERING  
BISHOP"**

By Eric Stanley Gardner, with  
**DONALD WOODS  
ANN DVORAK**

ANNE NAGEL • LINDA PERRY  
CRAIG REYNOLDS • GORDON  
OLIVER • JOSEPH CREHAN  
Directed by William Clemens  
A First National Picture

THRILLS!  
CHILLS!  
LAUGHS!  
MURDER!



WIN \$50.00 IN AWARD!—DRAWING BETWEEN 8:30 and 9:00  
GET YOUR PROXY CARD AT MATINEE

# Alpine & Rex THEATRES

Main Street, Marlinton, W. Va.

Sec. 562, P. L. & R.

Program Starting June 26, 1937

REX THEATRE

Saturday and Sunday, June 26 and 27

**SIMONE SIMON**

... greater than you ever  
dreamed... in the role  
she was born to play!

**JAMES STEWART**

JEAN HERSHOLT  
GREGORY RATOFF  
GALE SONDERGAARD  
J. EDWARD BROMBERG



**'SEVENTH  
HEAVEN'**

MATINEES 2:30 — ADMISSION 10c and 15c

EVENING SHOWS 7:00 — ADMISSION 15c and 20c

Thursday July 29th 1937 BANK NITE



**"I'M A RICH MAN'S WIFE..."**



**"Her Husband Lies"**  
with  
GAIL PATRICK - RICARDO CORTEZ

SELECTED SHORT SUBJECTS  
YOU HAVE UNTIL FRIDAY NOON TO CLAIM MONEY  
IF YOU BUY MATINEE TICKET

# Alpine & Rex

**THEATRES**

Main Street, Marlinton, W. Va.

Soc. 562, P. L. & R.

Program Starting July 2, 1937

**REX THEATRE**

Saturday and Sunday, July 3 and 4



SELECTED SHORT SUBJECTS  
MATINEE 10c and 15c  
EVENING 15c and 20c

Thursday, July 15 — Bank Night

**A THRILL WITH EVERY  
CLICK OF THE METER!**



**'MIDNIGHT  
TAXI'**

A woman in a man's  
world of crime... and  
the man who was sworn  
to get her! Fearless,  
relentless enemies...  
till love comes to them  
in a hail of bullets!

**BRIAN DONLEVY  
FRANCES DRAKE  
ALAN DINEHART  
SIG RUMANN  
GILBERT ROLAND**

SELECTED SHORT SUBJECTS  
YOU HAVE UNTIL FRIDAY NOON TO CLAIM MONEY IF  
YOU BUY MATINEE TICKET

# Alpine & Rex

**THEATRES**

Main Street, Marlinton, W. Va.

SEC. 562, P. L. & R.

Program Starting July 9, 1937

Sat. and Sun., July 10 and 11

— REX THEATRE —



Just because he's her hand-some butler, can she call him her "Personal Property"?

**HARLOW  
TAYLOR**

**"Personal Property"**

REGINALD OWEN

SELECTED SHORT SUBJECTS

MATINEE—10c and 15c

EVENING—15c and 20c

Thursday, July 22 **BANK NIGHT**

*They didn't want to...*

but it snowed and snowed  
... and they were just  
forced to stay in that cozy  
mountain lodge ... for  
days and days!



**DON AMECHE and ANN SOTHERN**

**'FIFTY ROADS  
TO TOWN'**

**ALL OF THEM SNOWBOUND...HOORAY!**



SLIM SUMMERVILLE  
JANE DARWELL  
JOHN QUALEN  
DOUGLAS FOWLEY  
ALLAN LANE  
ALAN DINEHART  
STEPIN FETCHIT

SELECTED SHORT SUBJECTS  
YOU HAVE UNTIL FRIDAY NOON TO CLAIM MONEY  
IF YOU BUY MATINEE TICKET

# Alpine & Rex

**THEATRES**

Main Street, Marlinton, W. Va.

SEC. 562, P. L. & R.

**Program Week of July 16th, 1937**

**Saturday and Sunday, July 17, 18**

**REX THEATRE**



SELECTED SHORT SUBJECTS

Matinee 10c and 15c

Evening 15c and 20c

SUNDAY and MONDAY, AUG. 8 and 9

THE WORLD IS MINE TONIGHT...

... he sang as his magic voice stole into the heart of a golden girl and imprisoned her with its enchantment! A glorious romance with glorious music ... packed with excitement, thrills and breath-taking climaxes!



COMEDIES

NEWS

Thursday — BANK NIGHT

# Alpine & Rex

THEATRES

Main Street, Marlinton, W. Va.

SEC. 562, P. L. & R.

Program Week of August 3rd, 1937

TUESDAY and WEDNESDAY, AUG. 3 and 4



SELECTED SHORT SUBJECTS

Chapter 5 of "JUNGLE JIM"

REX THEATRE  
SATURDAY and SUNDAY, AUG. 14 and 15

# SING AND BE HAPPY

ANTHONY MARTIN  
LEAH RAY  
JOAN DAVIS  
HELEN WESTLEY  
ALLAN LANE  
DIXIE DUNBAR



The whole idea laughs  
the lift... to sing  
everybody happy is  
What a beautiful  
beginning  
Travelin' Light  
Sing and Be Happy  
and other hits by  
Sidney Clark and Harry Akst

## SELECTED SHORT SUBJECTS

Matinees Saturday and Sunday 2:30  
Evening Saturday 7:00 — Sunday 9:00  
Evening Admission 15c and 20c — Matinee 10c and 15c

Thursday — BANK NIGHT — "MELODY FOR TWO"

# Alpine & Rex

## THEATRES

Main Street, Marlinton, W. Va.

SEC. 562, P. L. & R.

Program Week of August 8th, 1937

SUNDAY and MONDAY, AUG. 8 and 9

"THE WORLD IS MINE TONIGHT..."



Nino Martini  
**THE GAY DESPERADO**

Matinee 2:30 P. M. — Admission 10c and 20c

Evening Show 9:00 P. M. — Admission 15c and 25c

## SELECTED SHORT SUBJECTS

REX THEATRE

SATURDAY and SUNDAY, AUG. 21 and 22



"KID GALAHAD"

—with—

Edw. G. ROBINSON - Bette DAVIS

SELECTED SHORT SUBJECTS

Matinees Saturday and Sunday 2:30

Evening — Saturday 7:00 — Sunday 9:00

Evening Admission 15c and 20c — Matinee Admission 10c and 15c

Thursday — BANK NIGHT — "23 1/2 HOURS LEAVE"

# Alpine & Rex

THEATRES

Main Street, Marlinton, W. Va.

SEC. 562, P. L. & R.

Program Week of August 15th, 1937

SUNDAY and MONDAY, AUG. 15 and 16



Matinee 2:30 P. M. — Admission 10c and 20c

Evening Show 9:00 P. M. — Admission 15c and 25c

SELECTED SHORT SUBJECTS

SATURDAY and SUNDAY, SEPTEMBER 4 and 5

**SING!**

**SWING!**

Mad melody soars  
high as foot-free Fred  
and Ginger scatter  
star dust on the  
palpitating  
U. S. A.



**Fred Astaire & Ginger Rogers**  
**"Shall We Dance"**

With  
**Edward Everett Horton**  
**Eric Blore · Jerome Cowan ·**  
**Oh, what music by**  
**George Gershwin**

SELECTED SHORT SUBJECTS

Matinees Saturday and Sunday 2:30

Evening—Saturday 7:00; Sunday 9:00

Evening Admission 15c and 20c Matinee Admission 10c and 15c

# Alpine & Rex

## THEATRES

Main Street, Marlinton, W. Va.

SEC. 562, P. L. & R.

Program Week of August 29, 1937

SUNDAY and MONDAY, AUGUST 29 and 30



Shake that swing off your shoes...everybody's "JAMMIN" now!

**"TURN OFF THE MOON"**

**CHARLIE RUGGLES**  
Eleanor Whitney · Johnny Downs  
Kennn. Baker · Phil Harris and his Band

Hot music!

Hot rhythms!

Matinee 2:30 P. M.—Admission 10c and 20c

Evening Show 9:00 P. M.—Admission 15c and 25c

SELECTED SHORT SUBJECTS

REX THEATRE  
SATURDAY AND SUNDAY, SEPTEMBER 11 AND 12

**TWO AGAINST THE WORLD**  
Their glorious romance  
rocked the foundations of  
an Empire! Lovely Myrna  
in Gable's arms... the  
year's biggest thrill!

**M-G-M's MIGHTIEST DRAMA!**  
**CLARK GABLE**  
*Myrna* **LOY**  
*in* **PARNELL**

with EDNA MAY OLIVER  
EDMUND GWENN • ALAN MARSHAL  
DONALD CRISP • BILLIE BURKE

SELECTED SHORT SUBJECTS  
Matinee Saturday and Sunday 2:30 P. M.  
Evening — Saturday 7:00; Sunday 9:00  
Evening Admission 15c and 20c — Matinee Admission 10c and 15c

# Alpine & Rex

THEATRES

Main Street, Marlinton, W. Va.

SEC. 562, P. L. & R.

Program Week of Sept. 5th, 1937

SUNDAY AND MONDAY, SEPT. 5 AND 6

It's Sparkling Sky-Larking Romantic Fun!

Adeline Zuker presents  
**CLAUDETTE COLBERT**  
**"I MET HIM IN PARIS"**  
with Melvyn Douglas - Robert Young  
Produced and Directed by Wesley Ruggles

Matinee 2:30 P. M. — Admission 10c and 20c  
Evening Show 9:00 P. M. — Admission 15c and 25c  
SELECTED SHORT SUBJECTS

REX THEATRE

SAT. and SUN., SEPT. 11 and 12

NO MAN EVER PAID A GREATER  
PRICE... FOR LOVE!



CLARK  
**GABLE**  
*Myrna*  
**LOY**

The romance that  
rocked the founda-  
tions of an em-  
pire... now lives  
on the screen!

**PARNELL**

2 GREAT  
STARS...  
AND WHAT  
A CAST!

with  
EDNA MAY OLIVER • EDMUND GWENN  
ALAN MARSHAL • DONALD CRISP  
BILLIE BURKE • Based on the Broadway Stage Sen-  
sation by Elsie T. Schaeffer, Screen Play by John Van Druten  
and S. N. Behrman, Directed by John M. Stahl

SELECTED SHORT SUBJECTS

Matinees Saturday and Sunday 2:30 P. M.  
Evening—Saturday 7 P. M.; Sunday 9 P. M.  
Evening Admission—15c and 20c  
Matinee Admission—10c and 15c

# Alpine & Rex

THEATRES

Main Street, Marlinton, W. Va.

SEC. 562, P. L. & R.

Program Week of September 12, 1937

SUN. and MON., SEPT. 12 and 13

THE STRANGEST CASE THAT EVER  
ROCKED A HALL OF JUSTICE!



Matinee 2:30 P. M.—Admission 10c and 20c  
Evening Show 9 P. M.—Admission 15c and 25c

SELECTED SHORTS

REX THEATRE

Saturday and Sunday, Sept. 25 and 26

**GREATEST OF  
ALL DRAMAS  
OF THE SEA!**

Adventure storming  
with epic sweep over  
half the world! Two  
years to make! A  
fortune to film! A  
matchless cast of stars!



*Warner* *Wallace*  
**BAXTER BEERY**  
*in*  
**SLAVE SHIP**

SELECTED SHORT SUBJECTS

Matinees Saturday and Sunday, 2:30 P. M.

Evening Saturday 7:00 — Sunday 9:00 P. M.

Evening Admission 15c and 20c — Matinee Admission 10c and 15c

**Alpine & Rex  
THEATRES**

Main Street, Marlinton, W. Va.

SEC. 562, P. L. & R.

Program Week of Sept. 19th, 1937

Sunday and Monday, Sept. 19 and 20

**AN ETERNITY IN ONE  
STOLEN KISS...!**

**THE DAWN COMES UP LIKE THUNDER...**  
on the greatest love story of the century!



**KAY FRANCIS  
ERROL FLYNN**

*in Warner Bros.*  
**Another Dawn**

*with* **TAN HUNTER  
FRIEDA INESCORT**



*Tonight Is Ours...*

Matinee 2:30 P. M. — Admission 10c and 20c

Evening Show 9:00 P. M. — Admission 15c and 25c

SELECTED SHORT SUBJECTS

REX THEATRE  
Saturday and Sunday, October 2 and 3



Challenging the supremacy of "Mutiny on the Bounty"... comes the new titan of all screen adventure! Kipling's genius... M-G-M's production wizardry... combine to bring you your finest experience in the theatre!

# Captains Courageous

WITH—  
*Freddie*  
BARTHOLOMEW  
SPENCER TRACY  
LIONEL BARRYMORE  
MELVYN DOUGLAS



## THRILLS!

SEE—Harvey, the boy falls off the liner into the sea!  
SEE—The rescue!  
SEE—Race between the "We're Here" and "Jenny Cushman!"  
SEE—Return to sweet hearts ashore!

## SELECTED SHORT SUBJECTS

Matinee Saturday and Sunday 2:30 P. M.  
Evening—Saturday 7 P. M.; Sunday 9 P. M.  
Evening Admission — 15c and 20c  
Matinee Admission — 10c and 15c

# Alpine & Rex THEATRES

Main Street, Marlinton, W. Va.

SEC. 562, P. L. & R.

Program Week of October 3rd, 1937

Sunday and Monday, October 3 and 4



Thrills... and heart-throbs, too... in Wally's swiftest hit!

with UNA MERKEL  
ERIC LINDEN  
JUDITH BARRETT  
BETTY FURNESS  
TED HEALY

Matinee 2:30 P. M. — Admission 10c and 20c  
Evening Show 9:00 P. M. — Admission 15c and 25c

## SELECTED SHORTS

REX THEATRE  
Sat. and Sun., October 16 and 17



starring **SHIRLEY  
TEMPLE**  
and **VICTOR  
M. LAGLEN**

with **C. AUBREY SMITH  
JUNE LANG  
MICHAEL WHALEN  
CESAR ROMERO  
CONSTANCE COLLIER  
DOUGLAS SCOTT**

Directed by **JOHN FOSH**  
Academy Award Winner  
Darryl F. Zanuck in Charge of Production

SELECTED SHORT SUBJECTS  
Matinee Saturday and Sunday at 2:30 P. M.  
Evening—Saturday 7:00 P. M.—Sunday 9 P. M.  
Evening—Admission 15c and 20c  
Matinee—Admission 10c and 15c

# Alpine & Rex THEATRES

Main Street, Marlinton, W. Va.

SEC. 562, P. L. & R.

Program Week of October 10, 1937

Sun. and Mon., October 10 and 11



Matinee 2:30 P. M.—Admission 10c and 20c  
Evening Show 9:00—Admission 15c and 25c  
SELECTED SHORTS

REX THEATRE  
SATURDAY AND SUNDAY, OCTOBER 30 AND 31



CLARK *Gable* JEAN *Harlow*

From the brilliant authors of "San Francisco"... comes this colorful, glamorous drama of The Sport of Kings! Filmed against the exciting backgrounds of famed Saratoga and luxurious Miami—it is the first race track romance to take rank with 1934's memorable "Broadway Bill."

**SARATOGA**



SELECTED SHORT SUBJECTS  
Matinees Saturday and Sunday at 2:30 P. M.  
Evening—Saturday 7:00 P. M. — Sunday 9 P. M.  
Evening—Admission 15c and 20c  
Matinee — Admission 10c and 15c

# Alpine & Rex

THEATRES

Main Street, Marlinton, W. Va.

SEC. 562, P. L. & R.

Program Week of October 31st, 1937

SUNDAY AND MONDAY, OCT. 31 AND NOV. 1

FLAMING LOVE-DRAMA AGAINST THE BACKGROUND  
OF SPAIN'S CIVIL WAR!



Matinee 2:30 P. M. — Admission 10c and 20c  
Evening Show 9:00 — Admission 15c and 25c

SELECTED SHORTS

# REX THEATRE

SATURDAY AND SUNDAY, NOVEMBER 13 AND 14

Pearl Buck's novel now springs to life! It's coming!  
Most eagerly awaited film in history—you will  
get the thrill of a lifetime!  
Never again such a show  
on stage or screen!



The drama,  
the love  
story, the  
thrills. It's  
just like the  
book!

3 years to pro-  
duce! It cost a  
fortune! Thou-  
sands in its cast!

The BIGGEST  
of all  
M-G-M HITS!

## THE GOOD EARTH STARRING PAUL MUNI AND LUISE RAINER



M. P. Award  
Winner for  
1937!

WALTER  
CONNOLLY

Tilly Lo-  
Charles

### SELECTED SHORT SUBJECTS

Matinee Saturday and Sunday 2:30 P. M.  
Evening—Saturday 7 P. M.—Sunday 9 P. M.  
Evening Admission — 15c and 20c  
Matinee Admission — 10c and 15c

# Alpine & Rex THEATRES

Main Street, Marlinton, W. Va.

SEC. 562  
P., L. & R.

Program Week of November 7th, 1937

SUNDAY AND MONDAY, NOVEMBER 7 AND 8

THEY FOUGHT FOR LOVE OF A DAME  
... AND THE HATE OF EACH OTHER!

## SAN QUENTIN



PAT  
O'BRIEN  
HUMPHREY BOGART  
ANN SHERIDAN • BARTON MACLARE  
A First National Picture • Directed by  
Lloyd Bacon • Presented by Warner Bros.

Matinee 2:30 P. M. — Admission 10c and 20c

Evening Show 9 P. M.—Admission 15c and 25c

### SELECTED SHORTS

REX THEATRE  
SATURDAY AND SUNDAY, NOVEMBER 13 AND 14



It's here at last!  
...the truly great  
picture M-G-M  
spent a fortune  
to make from  
Pearl Buck's  
Pulitzer Prize  
Novel! Thrills,  
drama beyond  
compare!  
2,000 in cast!

# THE GOOD EARTH

ACADEMY  
AWARD  
WINNERS...  
Together now  
in their great-  
est triumph!

PALE Starring RUISE  
**MUNI-RAINER!**

with  
Walter CONNOLLY  
Tilly LOSCH



Matinee Saturday and Sunday at 2:30 P. M.  
Evening Saturday 7:00 P. M. — Sunday 9 P. M.  
Evening — Admission 15c and 20c  
Matinee — Admission 10c and 15c

# Alpine & Rex THEATRES

Main Street, Marlinton, W. Va.

SEC. 562  
P., L. & R.

Program Week of November 14th, 1937

SUNDAY AND MONDAY, NOVEMBER 14 AND 15

## BETWEEN TWO WOMEN

with  
**Franchot Tone**  
**Maureen O'Sullivan**  
**Virginia Bruce**

## GOODBYE TO THE WOMAN HE LOVED!

...to be loyal to  
a woman  
he hated!  
M-G-M's great  
successor to  
"Men In White"



Matinee 2:30 P. M. — Admission 10c and 20c  
Evening Show 9:00 P. M. — Admission 15c and 25c

SELECTED SHORTS

REX THEATRE  
SATURDAY and SUNDAY, NOV. 20 and 21

THE GAYEST SPOOKS YOU EVER SAW

...out for no good—  
and plenty of it! It's  
the surprise laugh  
hit of the year!



SEE...

Glamorous Con-  
nie walk out of  
an evening gown  
into invisibility!  
A driverless car  
do 90 miles an  
hour!

SELECTED SHORTS

Matinee Saturday and Sunday at 2:30 P. M.  
Evening—Saturday 7 P. M. — Sunday 8:30 P. M.  
Evening Adm. 15c and 20c — Matinee Adm. 10c and 15c

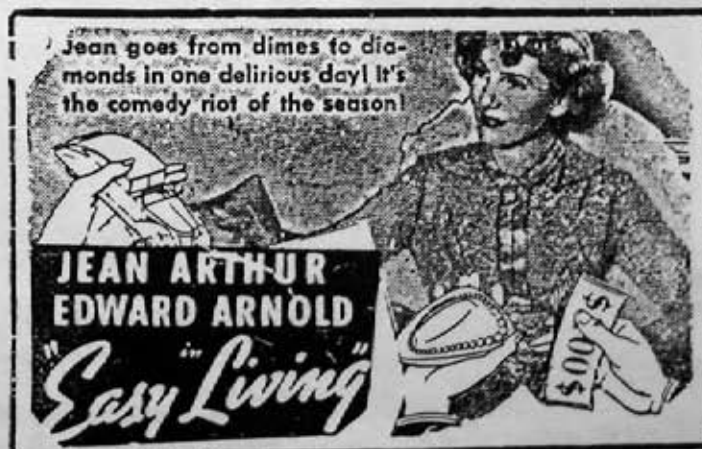
# Alpine & Rex THEATRES

Main Street, Marlinton, W. Va.

SEC. 562  
P., L. & R.

Program Week of November 21st, 1937

SUNDAY and MONDAY, NOV. 21 and 22



Matinee 2:30 P. M. — Admission 10c and 20c

Evening Show 8:30 P. M. — Admission 15c and 25c

SELECTED SHORTS

— REX THEATRE —  
SATURDAY and SUNDAY, NOVEMBER 27 and 28



**JACK BENNY**  
**"ARTISTS and MODELS"**

A Paramount Picture with

- IDA LUPINO
- RICHARD ARLEN
- GAIL PATRICK
- BEN HUIE • JUDY CANOVA
- THE YACHT CLUB BOYS
- LOUIS ARMSTRONG

and specially by  
**MARTHA RAYE**

**WHAT A PICTURE, FOLKS!**

The world's most beautiful girls... the world's topnotch song, dance and laugh artists!



Matinee Saturday and Sunday at 2:30 P. M.  
Evening Saturday 7:00 P. M. — Sunday 8:30 P. M.  
Evening Adm. 15c and 20c — Matinee Adm. 10c and 20c  
**SELECTED SHORT SUBJECTS**

**THURSDAY, DECEMBER 2 — BANK NIGHT**

**HIT STARS! HIT TUNES! HIT STORY!**

**THE HIT PARADE**

starring

**FRANCIS LANGFORD • PAUL REGAN**



# Alpine & Rex

## THEATRES

Main Street, Marlinton, W. Va.

SEC. 562  
P., L. & R.

Program Week of November 28th, 1937

**SUNDAY and MONDAY, NOVEMBER 28 and 29**



**AMAZING! DIFFERENT! UNIQUE!**

ROBERT MONTGOMERY • ROSALIND RUSSELL

**"NIGHT MUST FALL"**

with DAME MAY WHITTY • ALAN MARSHAL  
MERLE TOTTENHAM • KATHLEEN HARRISON  
Directed by Richard Thorpe • Produced by Hand Sizeland

Matinee 2:30 P. M. — Admission 10c and 20c  
Evening Show 8:30 P. M. — Admission 15c and 25c  
**SELECTED SHORTS**

Friday and Saturday, May 6 and 7  
DOUBLE FEATURE

They laughed at his wild heroics on the screen  
... but they changed their tune when he faced  
the guns of gangland on the open range.

# GEORGE O'BRIEN in **HOLLYWOOD COWBOY**

with  
CECILIA PARKER

RKO  
Radio  
Picture



A NEW KIND OF  
WESTERN THRILLER!

also  
"HIDEAWAY" with FRED STONE

# ALPINE THEATRE

Main Street, Marlinton, W. Va.

SEC. 562  
P. L. & R.

Program Week of May 1st, 1938

Two Days!

Two Days!

Sunday and Monday, May 1 and 2

THE MIGHTIEST  
ENTERTAINMENT THAT  
EVER THRILLED YOU!

**Roscoe** STARRING  
**NELSON EDDY** **ELEANOR POWELL**

featuring  
**FRANK MORGAN**  
**EDNA MAY OLIVER**  
Directed by W. S. VAN DYKE in  
A Metro-Goldwyn-Mayer Picture